

taole[®]
琼琚实业

坡口机，铣边机，管子坡口机，管道坡割机
PLATE EDGE BEVELING & MILLING MACHINE, PIPE BEVELING MACHINE,
PIPE CUTTING AND BEVELING MACHINE.



更安全，冷切削	MORE SAFE, COLD CUTTING
更省力，低噪音	LOW LABOUR, LOW NOISE
更简单，无污染	VERY EASLY, NON-POLLUTION

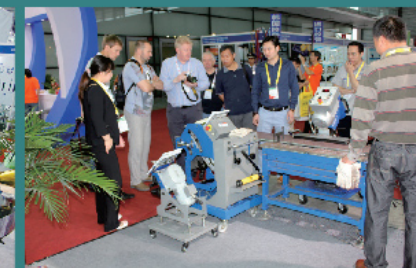
Shanghai Taole Machinery Co. Ltd is a Manufacturer, Supplier and Exporter of a wide variety of weld preparation machines like Plate Beveling Machine, Pipe Beveling tools, Pipe Cutting and Beveling Machine etc, what are widely used in Steel Construction, Oil & Gas welding industries, We export our products in more than 50 markets including Australia, Russia, Asia, New Zealand, Europe, etc. As well for repairing projects and welding manufacturing fields, We make contributions to enhance the efficiency.

As a manufacture in China, We feel proud to be credentialed with ISO 9001:2008, CE Certificate and SIRA Certification, which is an evidence of how well we produce our machines. Our machines are well accepted in both domestic and overseas market. Since the establishment of our company in 2004, we are working under the guidance of our mentor. His farsightedness and vast experience in the domain has proved in establishing a strong foothold in the industry. Our mission is "QUALITY, SERVICE and COMMITMENT". Provide the best solution for customer with high quality and great service.

Product Range

We are offering a comprehensive range of machines and its accessories that find application in shipbuilding, petrochemical, pressure vessels, metallurgy, Steel construction and various other industries for welding. The products we deal in available in different sizes and specifications, according to the requirements of customers. Listed below is our offered range:

- Plate Beveling & Milling Machine
- Pipe Cutting and Beveling Machine
- Pipe Beveling Tools
- Beveling Machine Accessories





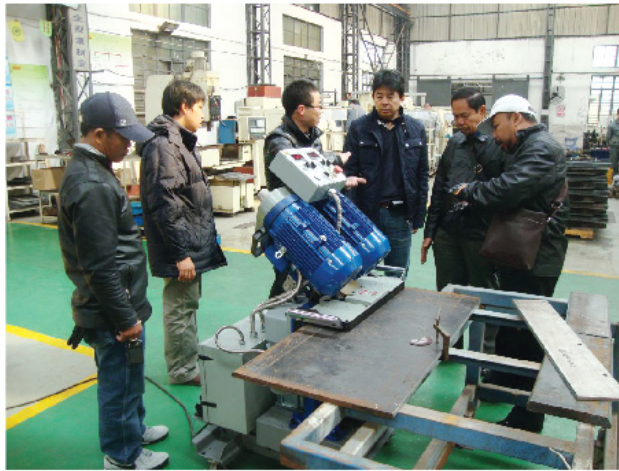
High Efficiency Energy Saving

高效 节能



sira
CERTIFICATION
ISO 9001:2008





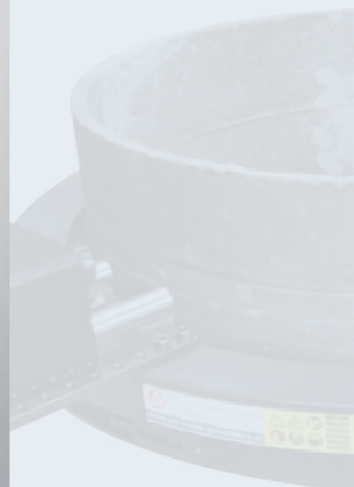
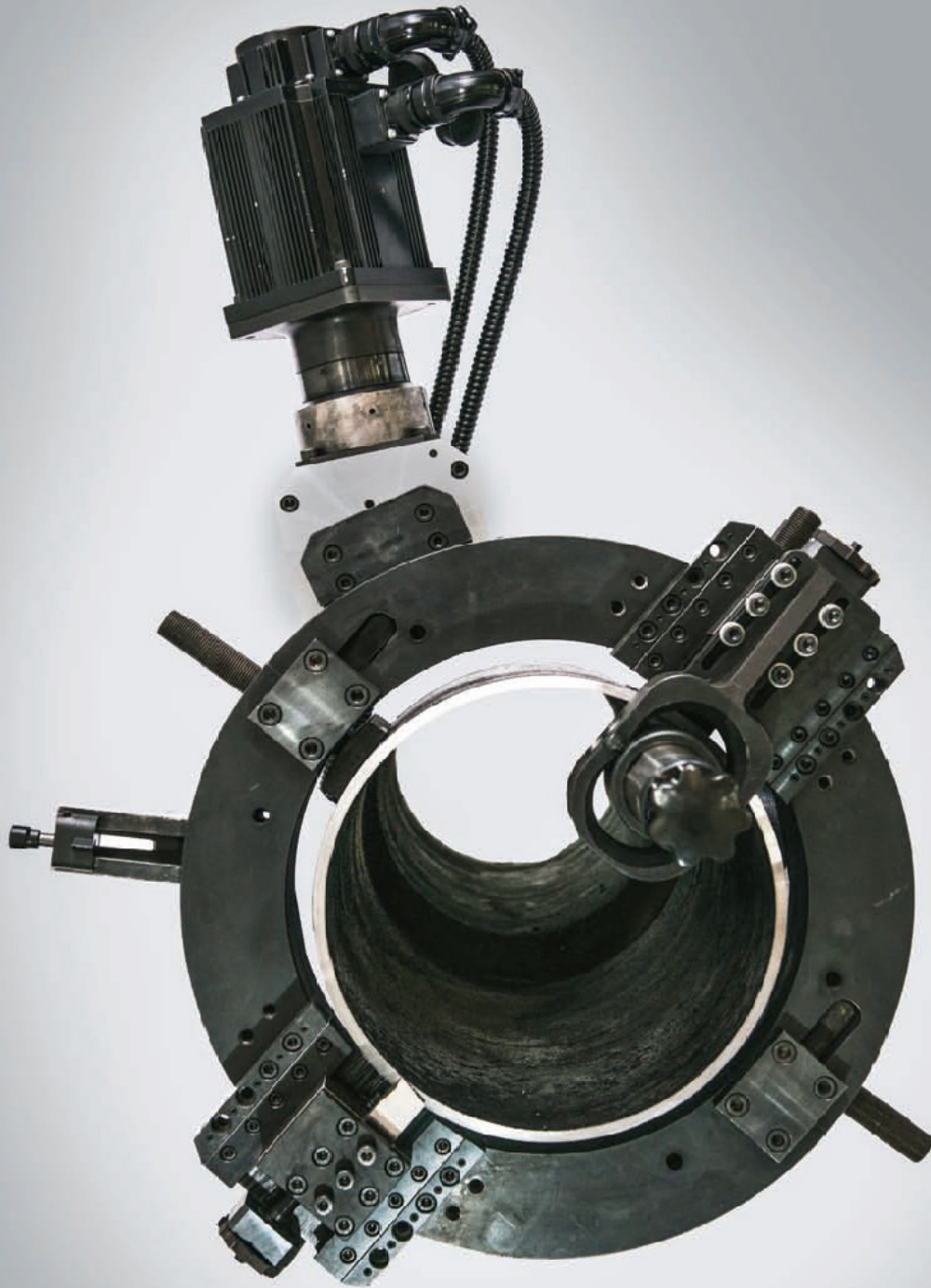
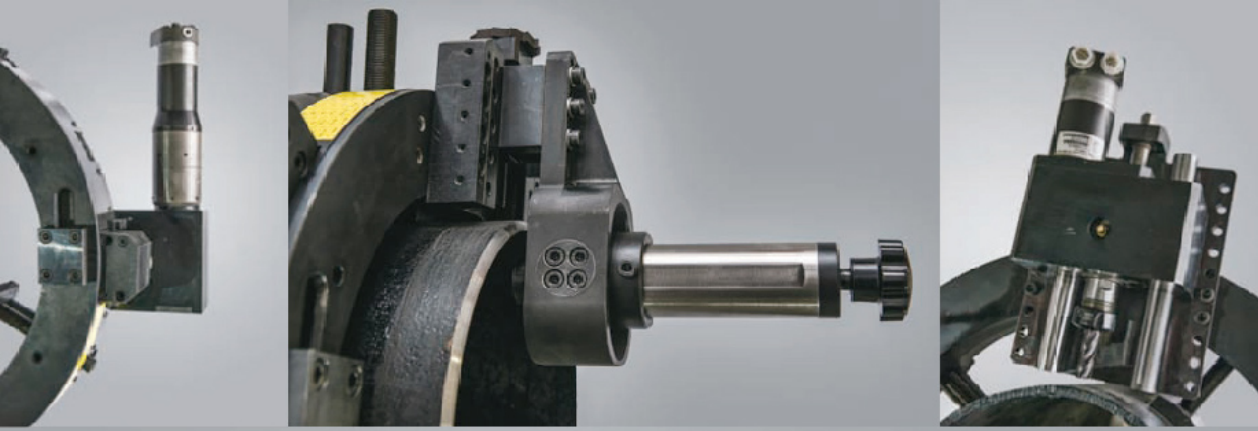
PART OF THE CUSTOMERS CONSTRUCTION SITE

部分客户施工现场



目录 CONTENTS

- 15 DH 钻铣切割机 Drilling and Milling Cutters
- 17 KM 管道镗孔机 Pipe Boring Machine
- 18 ISE 法兰端面加工机 Flange Face Machining
- 19 OCE/OCP 管子切割坡口机 Pipe Cutting and Beveling Machine
- 20 OCE/OCP 加工示意图 Processing Schematic
- 21 OCE 外嵌式电动坡口机 OD-Mounted Electric Pipe Cutting And Beveling Machine
- 22 OCP 外嵌式气动坡口机 OD-Mounted Pneumatic Pipe Cutting And Beveling Machine
- 23 CS 坡口刀具 Beveling Tools Bits
- 24 ISE 内涨式电动管子坡口机 Electric Pipe Beveling Machine
- 25 ISE 内涨式电动管子坡口机 Electric Pipe Beveling Machine
- 26 ISP 内涨式气动管子坡口机 Pneumatic Pipe Beveling Machine
- 27 SCB 凸轮式自定心坡口机 Cam-Type self-centering cutting and beveling machine
- 28 ISO 外夹式全自动坡口机 OD-Mounted Auto-feed Pipe Beveling Machine
- 29 部分客户施工现场 Part of the Customers Construction site
- 30 西气东输施工现场 West-east natural Gas transmission





钻铣刀具



钻铣刀架



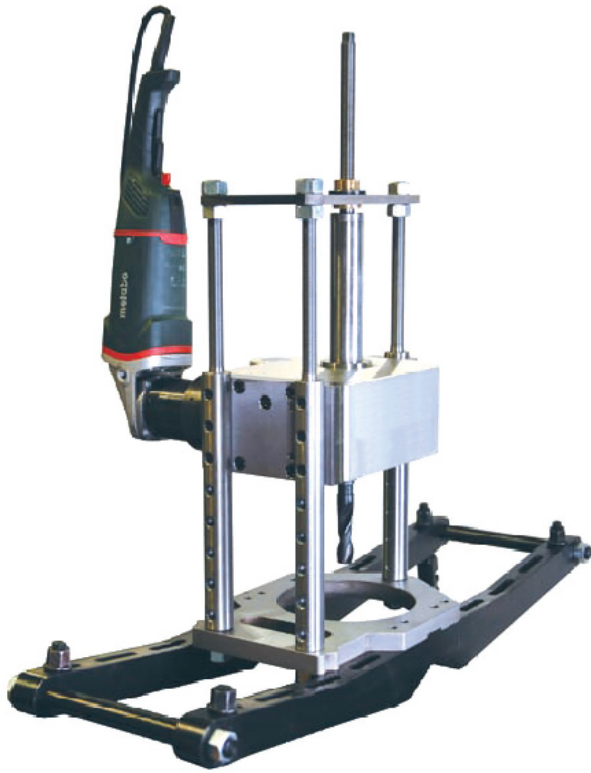
钻铣进刀



钻铣注油

技术参数

液压 Hydraulic	加工范围 (mm) Working Range (mm)	加工范围 (in) Working Range (in)	加工壁厚 (mm) Working Thickness (mm)
DH610H	406 / 610	16 / 24	≤50
DH660H	457 / 660	18 / 26	≤50
DH711H	508 / 711	20 / 28	≤50
DH762H	559 / 762	22 / 30	≤50
DH813H	610 / 813	24 / 32	≤50
DH866H	660 / 866	26 / 34	≤50
DH914H	711 / 914	28 / 36	≤50
DH965H	762 / 965	30 / 38	≤50
DH1016H	813 / 1016	32 / 40	≤50
DH1067H	866 / 1067	34 / 42	≤50
DH1118H	914 / 1118	36 / 44	≤50
DH1168H	965 / 1168	38 / 46	≤50
DH1219H	1016 / 1219	40 / 48	≤50
DH1270H	1067 / 1270	42 / 50	≤50
DH1321H	1118 / 1321	44 / 52	≤50
DH1372H	1168 / 1372	46 / 54	≤50
DH1422H	1219 / 1422	48 / 56	≤50
DH1473H	1270 / 1473	50 / 58	≤50
DH1524H	1321 / 1524	52 / 60	≤50

**产品特点**

本机适用于各种管道钻孔、镗孔，可镗孔最大直径为 127mm，采用德国麦太保电机驱动，也可采用液压及气动驱动方式，以适用于不同作业场合使用。针对大壁厚管道的镗孔作业，采用浮动式机体设计，提高整机刚性及稳定性。整机结构简单，重量轻，操作简便，可靠性强，非常适合电力、石化等领域的管道开孔作业。

Main performance

This applies to all kinds of pipe drilling, boring, boring can be a maximum diameter of 127mm, Germany Metabo motor, hydraulic and pneumatic drive may also be the way to apply for different job occasions. For large bore pipe wall thickness of the job, with floating body design, improve machine rigidity and stability. Machine structure is simple, light weight, easy operation, high reliability, very suitable for job openings pipeline power, petrochemical, and other fields.



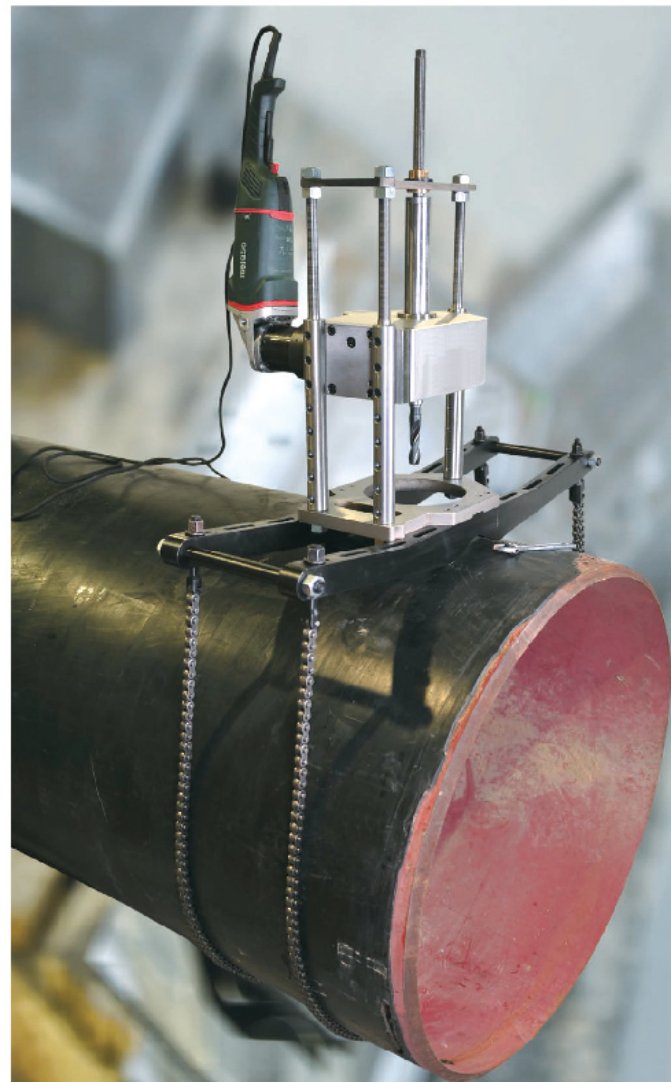
链条



镗孔机刀盘

技术参数

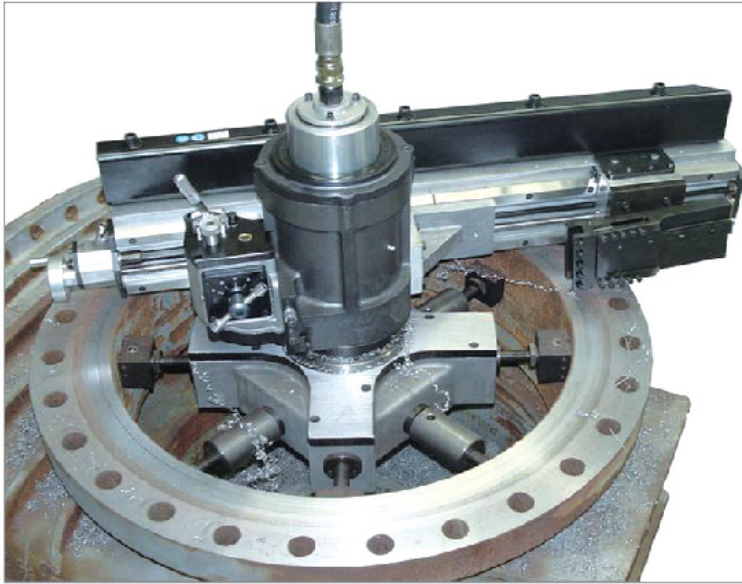
电 动 Electric	KM152E
液 压 Hydraulic	KM152H
气 动 Penumatic	KM152P
电 压 Voltage (V)	220
频 率 Freq (Hz)	50
功 率 Power (W)	2600
加工范围 (mm) Working Range (mm)	45
刀盘转速 Rotating rate (rpm)	≤127
加工范围 (in) Working Range (in)	≤4
加工深度 (mm) Working Depth (mm)	177.8



法兰端面加工机

Flange Face Machining

ISE

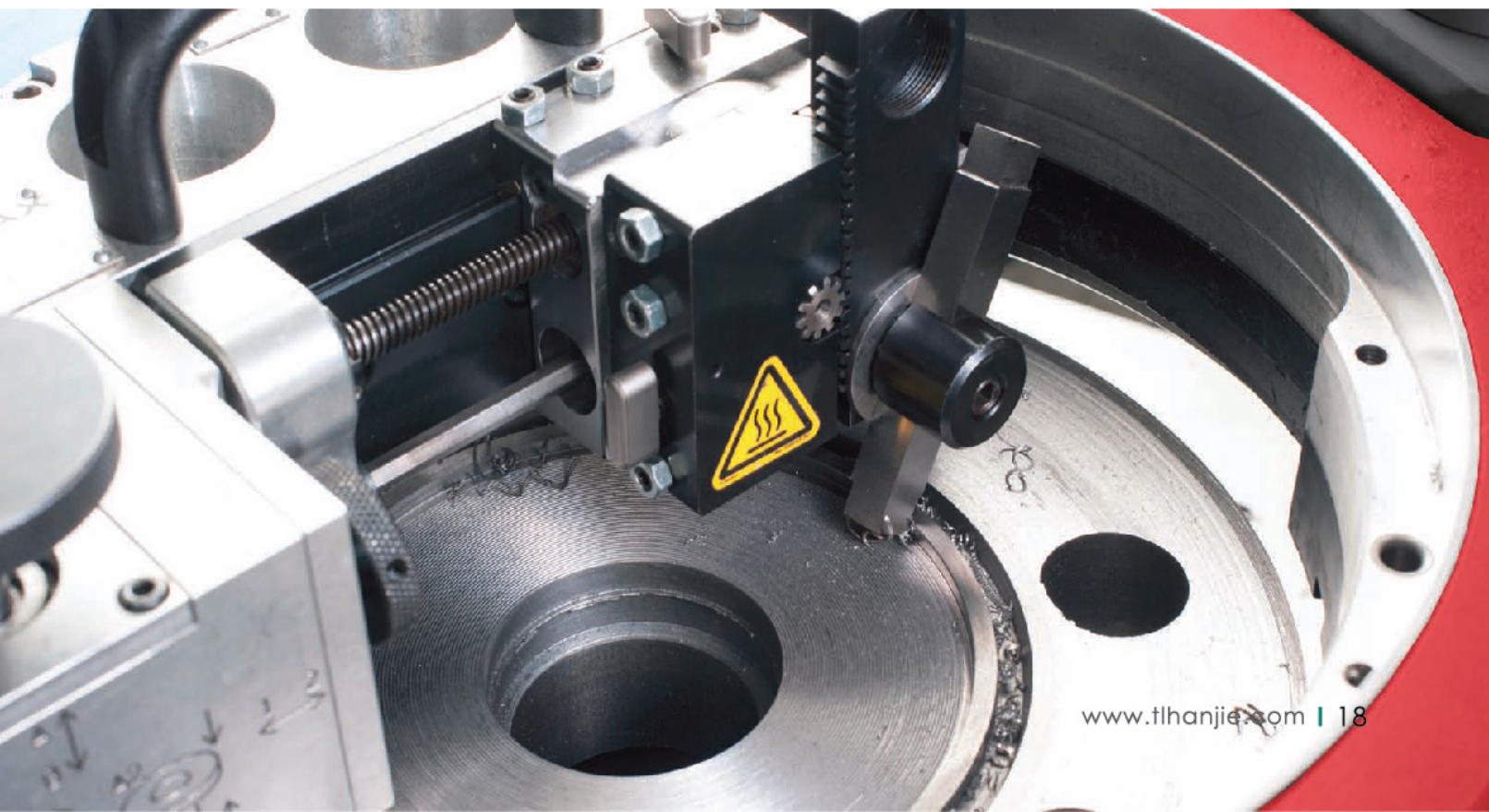
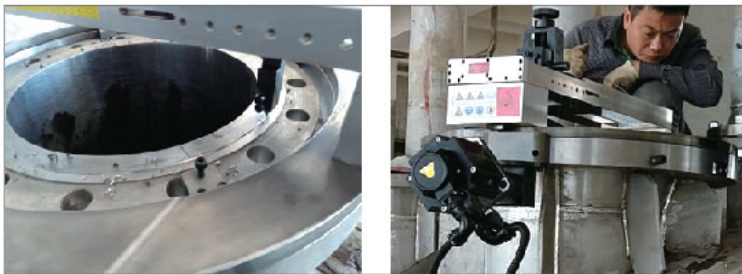


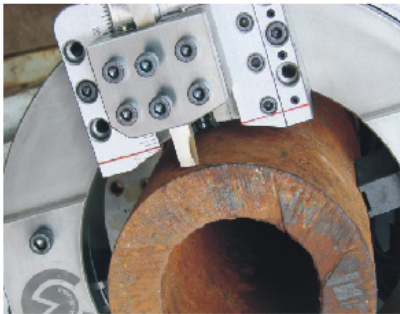
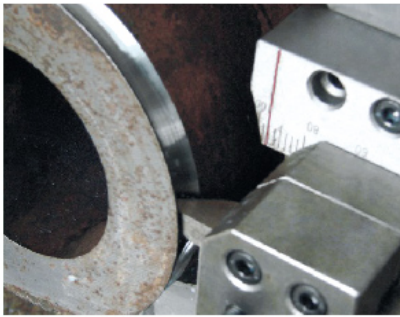
产品特点

本系列产品针对长距离管道施工和法兰加工而研发，外卡式的法兰面镗削加工设备，拥有独立知识产权。外卡定位安装，结构紧凑，尺寸小，重量轻，便于携带，操作简单，效率高。适用于加工直槽，斜槽以及各种法兰面加工，如盲法兰，换热器管板法兰。

Main performance

This series of products for the long-distance pipeline construction and flange processing and research and development, outside the cassette flange face boring processing equipment, with independent intellectual property rights. Wild card positioning installation, compact structure, small size, light weight, easy to carry, simple operation and high efficiency. Suitable for processing straight grooves, chutes and all the flange surface processing, such as blind flange, heat exchanger tube plate flange.





产品特点

本系列产品为轻便型外钳式电动管子切割坡口装置,具有重量轻、径向净空小、便于携带、使用方便等特点。

广泛应用于石油、天然气、压力容器、船舶、化工、锅炉、制药、食品、核工业、管道工程及管道设备安装、设备抢修等行业领域。

驱动方式

电动OCE；气动OCP；液压OCH；数控OCS四种。

FEATURES

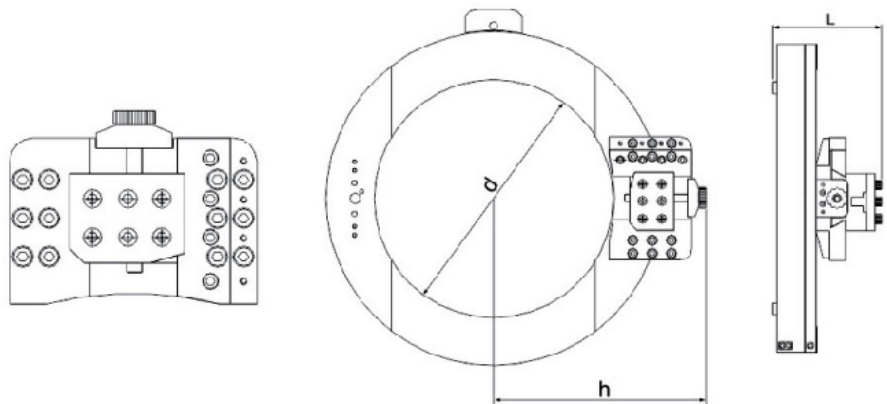
This series are portable OD-mounted pipe cutting and bevelling machine with the following advantages: lighter weight, minimal radial space, easy to operate.

APPLICATION RANGE

They are widely used in the fields of petroleum, chemical, natural gas, power plant construction, boiler and nuclear power, such as the project of WestGas Transporting to East China.

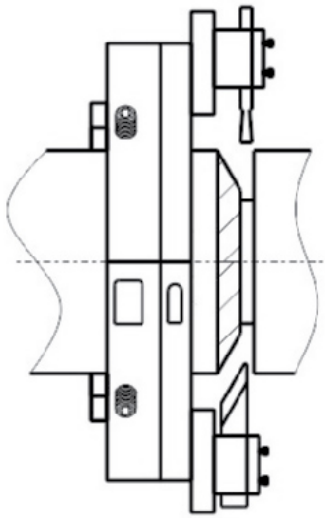
DRIVING TYPE

Electric-OCE, Pneumatic-OCP, Hydraulic-OCH, NC-OCS.

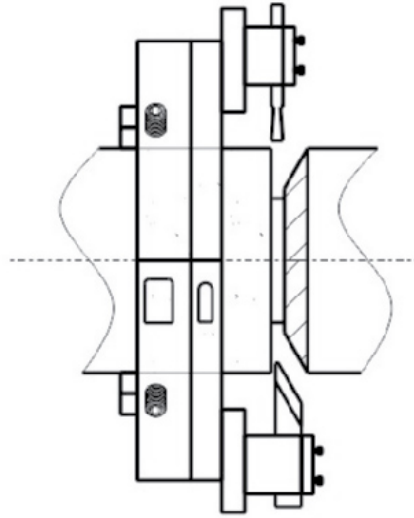


轴向和径向净空量图表

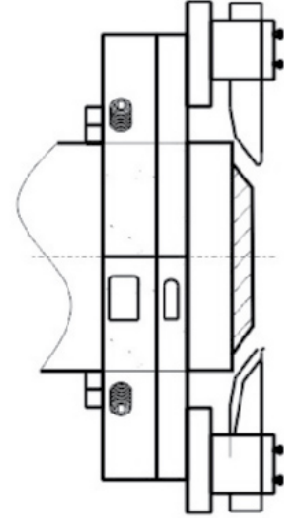
规格型号 (Model)	"d" DIM(mm)	"h" DIM(mm)	"L" DIM(mm)
OCE/OCP-89	90	132	159
OCE/OCP-159	160	217	171
OCE/OCP-168	170	227	171
OCE/OCP-230	232	253	171
OCE/OCP-275	280	275	171
OCE/OCP-305	308	290	171
OCE/OCP-325	330	300	171
OCE/OCP-377	380	328	171
OCE/OCP-426	430	351	172
OCE/OCP-457	460	367	172
OCE/OCP-508	510	396	181
OCE/OCP-560	560	420	182
OCE/OCP-610	612	445	182
OCE/OCP-630	632	454	182
OCE/OCP-660	670	475	182
OCE/OCP-715	715	495	185
OCE/OCP-762	765	520	185
OCE/OCP-830	830	555	187
OCE/OCP-914	915	592	194
OCE/OCP-1066	1070	619	194
OCE/OCP-1230	1235	777	207



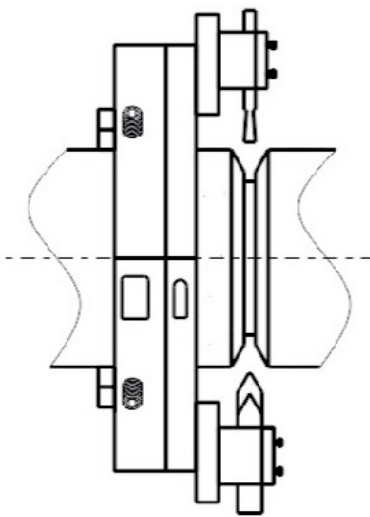
A 切割坡口加工
A Cutting & Beveling (RH)



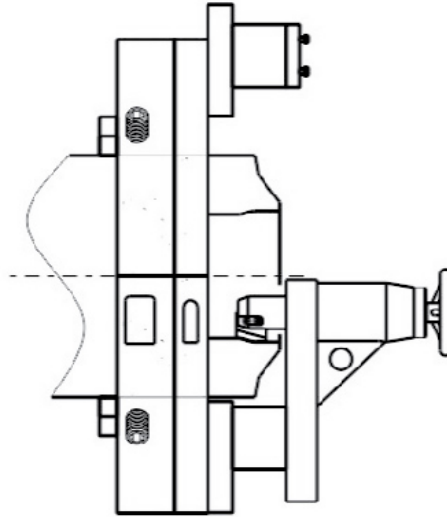
B 反刀切割坡口加工
B Cutting & Beveling (LH)



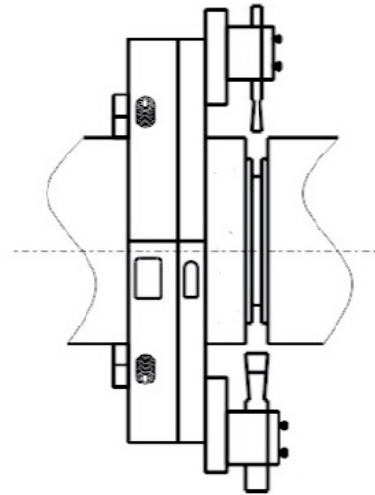
C 37.5 & 10复合坡口加工
C 37.5 & 10 Deg. Compound Beveling



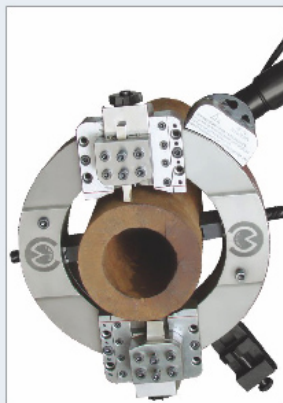
D V型坡口加工
D Double V Beveling



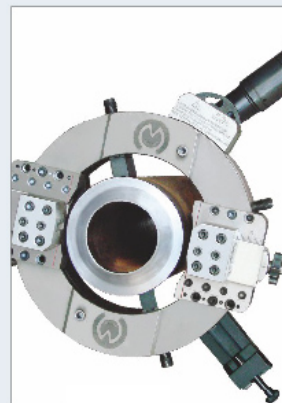
E 内复合坡口加工
E Counter Boring



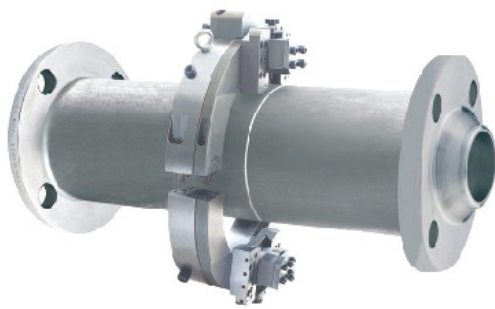
F 双切割 (切割) 加工
F Cold Cutting



坡口前 Before beveling



坡口后 After beveling



产品特点

本机采用交流220V高性能电机为动力，电机频率为50HZ,允许电流6A，电机功率为1.5-2KW。本机为轻便型外观，具有操作简便，径向净空小等特点。

FEATURES

Power Supply: 220-240V 1PH 50/60HZ

Motor Power: 1.5-2KW

两瓣式机型结构特点

径向净空量小, 重量轻, 适用于环境狭小, 空间小的场所;

可对半分开, 此结构适用于管子两端均有物件, 不易拆卸或不能拆卸的情况;

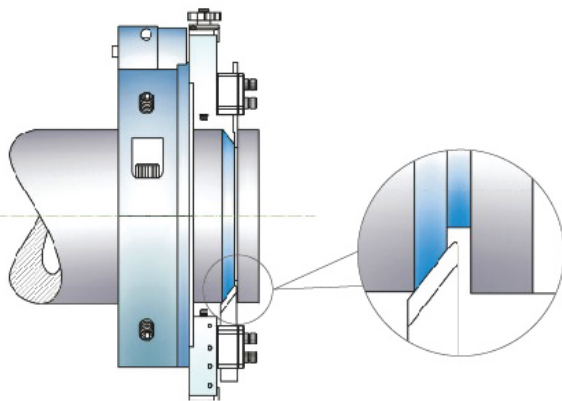
一次装夹, 可同时完成切割与坡口的加工。

Characteristic

Lower axial and radial clearance, light weight suitable for working at narrow and complicated site;

Can separate to two half, it's easy for the pipe when two end not open;

The machines do the cutting and beveling simultaneously.



技术参数

规格型号 (Model)	加工范围 (ID-OD) Working Range (ID-OD)		切割坡口壁厚 Wall thickness	刀盘转速 Rotation Speed
OCE-89	Ø25-89	3/4"-3"	≤35	42 r/min
OCE-159	Ø50-159	2"-5"	≤35	20 r/min
OCE-168	Ø50-168	2"-6"	≤35	21 r/min
OCE-230	Ø80-230	3"-8"	≤35	20 r/min
OCE-275	Ø125-275	5"-10"	≤35	20 r/min
OCE-305	Ø150-305	6"-10"	≤35	18 r/min
OCE-325	Ø168-325	6"-12"	≤35	16 r/min
OCE-377	Ø219-377	8"-14"	≤35	13 r/min
OCE-426	Ø273-426	10"-16"	≤35	12 r/min
OCE-457	Ø300-457	12"-18"	≤35	12 r/min
OCE-508	Ø355-508	14"-20"	≤35	12 r/min
OCE-560	Ø400-560	16"-22"	≤35	12 r/min
OCE-610	Ø457-610	18"-24"	≤35	11 r/min
OCE-630	Ø480-630	20"-24"	≤35	11 r/min
OCE-660	Ø508-660	20"-26"	≤35	11 r/min
OCE-715	Ø560-715	22"-28"	≤35	11 r/min
OCE-762	Ø600-762	24"-30"	≤35	11 r/min
OCE-830	Ø660-813	26"-32"	≤35	10 r/min
OCE-914	Ø762-914	30"-36"	≤35	10 r/min
OCE-1066	Ø914-1066	36"-42"	≤35	10 r/min
OCE-1230	Ø1066-1230	42"-48"	≤35	10 r/min

**产品特点**

本机采用气动马达驱动，特殊设计的传动机构可受力高强度的切削作用。有0.6-0.8MPa气源即可工作，经行星齿轮减速并传动旋转齿圈转动，使刀架自动进刀，可调速，一次装夹，可同时完成切割与坡口加工，性能好精度高，主要应用于易燃，易爆危险性作业场所，使用安全可靠。

MAIN CHARACTERISTIC

Power Supply: 0.6-0.8 MPa@1500-2000L/min

Explosion Proof

Stable Performance

Simple structure makes easy to maintenance

Occasionally overload won't burn

性能参数

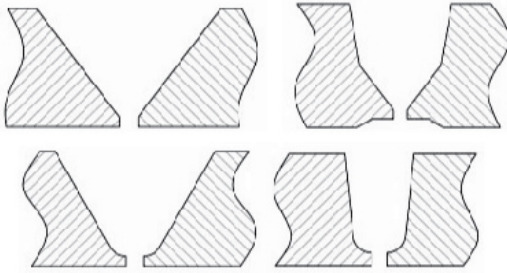
规格型号 (Model)	加工范围 (ID-OD) Working Range (ID-OD)		切割坡口壁厚 Wall thickness	刀盘转速 Rotation Speed	空气工作压力 Air Pressure	空气消耗量 Air Consumption
OCP-89	Ø25-89	3/4"-3"	≤35	50 r/min	0.8-1.0 MPa	1500 L/min
OCP-159	Ø50-159	2"-5"	≤35	21 r/min	0.8-1.0 MPa	1500 L/min
OCP-168	Ø50-168	2"-6"	≤35	21 r/min	0.8-1.0 MPa	1500 L/min
OCP-230	Ø80-230	3"-8"	≤35	20 r/min	0.8-1.0 MPa	1500 L/min
OCP-275	Ø125-275	5"-10"	≤35	20 r/min	0.8-1.0 MPa	1500 L/min
OCP-305	Ø150-305	6"-10"	≤35	18 r/min	0.8-1.0 MPa	1500 L/min
OCP-325	Ø168-325	6"-12"	≤35	16 r/min	0.8-1.0 MPa	1500 L/min
OCP-377	Ø219-377	8"-14"	≤35	13 r/min	0.8-1.0 MPa	1500 L/min
OCP-426	Ø273-426	10"-16"	≤35	12 r/min	0.8-1.0 MPa	1800 L/min
OCP-457	Ø300-457	12"-18"	≤35	12 r/min	0.8-1.0 MPa	1800 L/min
OCP-508	Ø355-508	14"-20"	≤35	12 r/min	0.8-1.0 MPa	1800 L/min
OCP-560	Ø400-560	16"-22"	≤35	12 r/min	0.8-1.0 MPa	1800 L/min
OCP-610	Ø457-610	18"-24"	≤35	11 r/min	0.8-1.0 MPa	1800 L/min
OCP-630	Ø480-630	20"-24"	≤35	11 r/min	0.8-1.0 MPa	1800 L/min
OCP-660	Ø508-660	20"-26"	≤35	11 r/min	0.8-1.0 MPa	1800 L/min
OCP-715	Ø560-715	22"-28"	≤35	11 r/min	0.8-1.0 MPa	1800 L/min
OCP-762	Ø600-762	24"-30"	≤35	11 r/min	0.8-1.0 MPa	2000 L/min
OCP-830	Ø660-813	26"-32"	≤35	10 r/min	0.8-1.0 MPa	2000 L/min
OCP-914	Ø762-914	30"-36"	≤35	10 r/min	0.8-1.0 MPa	2000 L/min
OCP-1066	Ø914-1066	36"-42"	≤35	9 r/min	0.8-1.0 MPa	2000 L/min
OCP-1230	Ø1066-1230	42"-48"	≤35	8 r/min	0.8-1.0 MPa	2000 L/min

外钳式管道坡割机刀片
Pipe Cutting and Beveling Machine Tool Bit

标配刀具
Standard

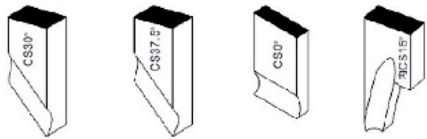


坡口类型
Typical welding seam

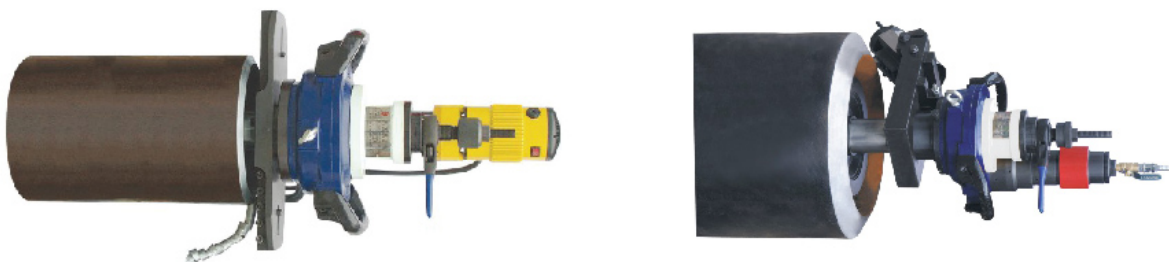
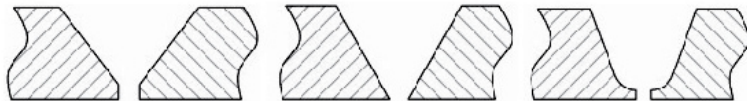


内涨式管子坡口机刀片
Pipe Beveling Machine Tool Bit

标配刀具
Standard



坡口类型
Typical welding seam

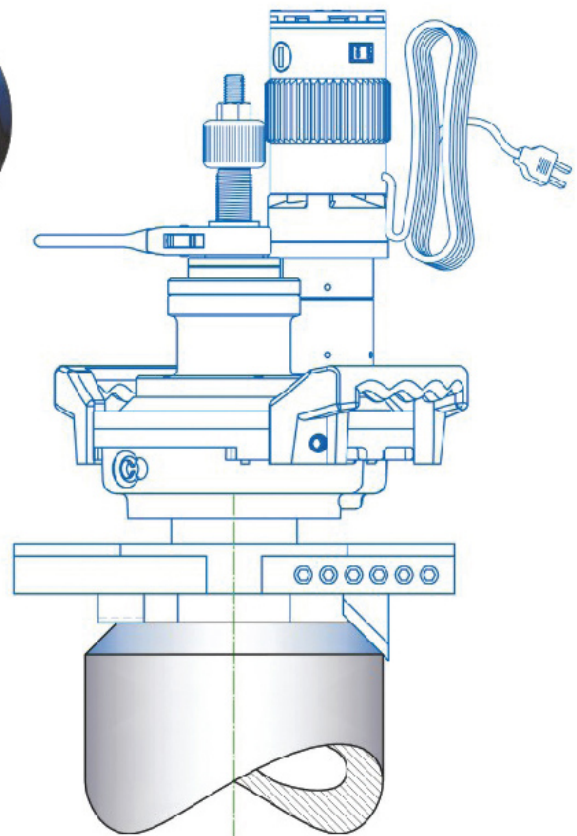


产品特点

系列为内径安装式坡口机具有重量轻携带方便等特点；
 安装容易、快速、胀紧机构插入管内径能自动定位对中心；
 本机除对碳钢、不锈钢、合金钢等材料管子的 U、V 型焊缝的坡口、倒棱、削边等加工外，并能对焊后的凸面法兰进行加工；
 坡口质量好、速度快、操作简单、切削量可微调，坡口角度由 0°-45°任意选择；
 内涨式管子坡口机分气动式，电动式两种，共十三种规格；
 电动式、气动式：ISE、ISP-30，80，120，159，252-2，352-1，352-2，426-1，426-2，630-1，630-2，850-1，850-2 型；
 本公司长期积累的制造经验，开发出一流品牌产品，已获国家专利多项，市场使用更广泛。

Main performance

This series is ID-mounted pipe beveling machine with light weight, compact design. There are 12 art No. for option ;
 Easy and quickly set-up self centered and squared to the bore ;
 The tool not only can process carbon steel, stainless steel and alloy pipe with U,v welding seam but also can process convex flange welded ;
 Fast precision, on-site beveling, the bevel angle by your required ;
 This series available for electric and pneumatic driven ;
 Electrical type、pneumatical type: ISE, ISP-30, 80, 120, 159, 252-2, 352-1, 352- 2, 426-1, 426-2, 630-1, 630-2, 850-1, 850-2type ;
 Our company make use of manufacturing experience which has been accumulated for long-run to exploit first-class brand product that have won Many items country patents . the product have widely used in the market.



**产品特点**

本系列为内涨安装式坡口机，具有安装简单容易，重量轻，携带方便等特点。胀紧机构插入管道内经能自动定位对中心。本机除对碳钢、不锈钢、合金钢等材料管子的U、V型焊缝的坡口、倒棱、削边等 外加工，并能对焊后的凸面法兰进行加工。坡口质量好，速度快，操作简单，切削量可选可调，坡口角度由0°-45°任意选择。

FEATURES

This series is ID-Mounted pipe beveling machine, with the advantage, easy operation, light weight. A draw nut is tightened, which expands the mandrel blocks up a ramp and against the ID surface for positive mounting, self centered and squared to the bore. it's can work with various material pipe, beveling angle as per your required.

Electric-OCE, Pneumatic-OCP, Hydraulic-OCH, NC-OCS.

内涨式电动系列

本机采用交流220V高性能电机为驱动，电机频率为50HZ，电流6A，电机功率1.4-2KW。本机具有安装容易，快捷，胀紧机构插入管内径能自动定位，机器重量轻，携带方便等特点。

ID-MOUNTED ELECTRIC SERIES

Power Supply:220-240V 1PH 50-60HZ

Motor Power:1.4-2KW

技术参数

规格型号 (Model)	加工范围 (ID-OD) Working Range (ID-OD)		切割坡口壁厚 Wall thickness	刀盘转速 Rotation Speed
ISE-30	Ø18-30	1/2"-3/4"	≤15	50 r/min
ISE-80	Ø28-89	1"-3"	≤15	55 r/min
ISE-120	Ø40-120	1 1/4"-4"	≤15	30 r/min
ISE-159	Ø65-159	2 1/2"-5"	≤20	35 r/min
ISE-252-1	Ø80-273	3"-10"	≤20	16 r/min
ISE-252-2	Ø80-273		≤75	16 r/min
ISE-352-1	Ø150-356	6"-14"	≤20	14 r/min
ISE-352-2	Ø150-356		≤75	14 r/min
ISE-426-1	Ø273-426	10"-16"	≤20	12 r/min
ISE-426-2	Ø273-426		≤75	12 r/min
ISE-630-1	Ø300-630	12"-24"	≤20	10 r/min
ISE-630-2	Ø300-630		≤75	10 r/min
ISE-850-1	Ø490-850	24"-34"	≤20	9 r/min
ISE-850-2	Ø490-850		≤75	9 r/min



产品特点

本系列机型采用气马达驱动，主要适用于易爆，防火等场所有 0.6-0.8MPa 气源即可工作，进给手轮上设有刻度尺，刀盘安装刀具可以选择任意角度。具有快速涨紧，自动定位，便于安装，使用安全可靠等特点。

FEATURES

This series machine adopts air motor, main applied at the site of explosive and fireproof, power supply required: 0.6-0.8MPa Compressed air. With the advantage of:

Fast Installation, self centered and working safely.

性能参数

规格型号 (Model)	加工范围 (ID-OD) Working Range (ID-OD)		切割坡口壁厚 Wall thickness	刀盘转速 Rotation Speed	空气工作压力 Air Pressure	空气消耗量 Air Consumption
ISP-30	Ø18-30	1/2"-3/4"	≤15	60 r/min	0.6 Mpa	900 L/min
ISP-80	Ø28-89	1"-3"	≤15	50 r/min	0.6 Mpa	900 L/min
ISP-120	Ø40-120	1,1/4"-4"	≤15	38 r/min	0.6 Mpa	900 L/min
ISP-159	Ø65-159	2,1/2"-5"	≤20	35 r/min	0.6 Mpa	1000 L/min
ISP-252-1	Ø80-273	3"-10"	≤20	16 r/min	0.6 Mpa	1000 L/min
ISP-252-2	Ø80-273		≤75	16 r/min	0.6 Mpa	1000 L/min
ISP-352-1	Ø150-356	6"-14"	≤20	14 r/min	0.7 Mpa	1200 L/min
ISP-352-2	Ø150-356		≤75	14 r/min	0.7 Mpa	1200 L/min
ISP-426-1	Ø273-426	10"-16"	≤20	12 r/min	0.7 Mpa	1500 L/min
ISP-426-2	Ø273-426		≤75	12 r/min	0.7 Mpa	1500 L/min
ISP-630-1	Ø300-630	12"-24"	≤20	10 r/min	0.7 Mpa	1500 L/min
ISP-630-2	Ø300-630		≤75	10 r/min	0.7 Mpa	1500 L/min
ISP-850-1	Ø490-850	24"-34"	≤20	9 r/min	0.8 Mpa	1500 L/min
ISP-850-2	Ø490-850		≤75	9 r/min	0.8 Mpa	1500 L/min

**产品特点**

采用高强度精度圈体结构，适用于各类管材的切断和坡口加工，尤其是对大批量薄壁管的切断、坡口加工。使用进口顶级品质的电机作为电动，噪音小、寿命长、重量轻、性能可靠，大范围调速，具有CE认证。其调速方式有两种：档位调速和电子无极调速，额定电压220V，频率50Hz。

自动定位管子中心，同心度和垂直度都无需人工调整；

结构紧凑美观，高强度铝质机身，小巧精致；

采用新型同步进给机构，进给均匀，刀具的寿命更长；

安装方便快捷，操作简单，维护方便；

切割和坡口一次性完成，加工效率很高；

完全冷加工，无火花，不会影响材质；

加工精度高，表面质量好，无毛刺；

适应性强，可根据需要对机器进行调速。

**FEATURES**

Adopt high strength & precision ring structure, apply for cutting and beveling pipe, especially for batch working of cutting, beveling for thin wall thickness pipe. Adopt METABO motor: low noise, long life, stable performance and perfect speed adjustable function, with CE certificate. Power Supply: 220-240V 1PH 50/60HZ.

Self-Centering, no need adjust work of concentricity & perpendicularity;

Compact structure and good appearance, high strength aluminum body;

Adopt new synchronous feeding mechanism, feeding uniformity, tool bits has longer working life;

Easy set-up, operation and maintain;

Cutting & beveling finished at same time, high working effective;

Cold working, no spark, won't make the material affected;

Perfect working precision, no burrs;

Well-adapted, you can make the speed adjust depend on the working conditions.

技术参数

规格型号 (Model)	加工范围 Working Range	切割坡口壁厚 Thickness	刀盘转速 Speed	整机重量 Weight
SCB-63	Ø14-63mm	≤12mm	30-120r/min	13kg
SCB-114	Ø57-114mm	≤12mm	30-120r/min	16kg

外夹式全自动坡口机

OD-Mounted Auto-feed Pipe Beveling Machine

ISO



产品特点

外夹式全自动坡口机系列采用德国 Metabo 原装进口电机，品质优越，适用于发电、管道安装、化工、造船等行业常用承压管道型号设定，主要用于管型设备的前期坡口制作及无工作空间限制的管道维修现场工作。

- 1、精巧的无极档位定心装置，简单的操作就可方便应对多种型号管道加工；
- 2、采用与专用型机具类似的传动结构和电机，整体性能可靠；
- 3、自动进退刀结构设计，操作灵活简单。



FEATURES

This series machine adopts METABO motor,main applied in the field of power plant pipeline installation,chemical industry, shipbuilding, especially pipeline prefabrication and low clearance on site working,such as maintain thermal power auxiliary equipment,boiler pipe valve.

- 1.Ingenious centering device, easy for process various of pipe size
- 2.Compact design,good rigidity
- 3.Tool feed/back automatically

性能参数

规格型号	加工范围	管材壁厚	夹紧方式	附件垫块	适用现场
ISO-63C	Ø32-63mm	≤12mm	双向夹紧	32.38.42.45.54.57.60.63	冶金、造船、石化等行业的管 件前期坡口制作及现场维修、 火电辅机部分、汽机锅炉管阀 部分的现场维修，可加工碳 钢、不锈钢、合金钢等管材。
ISO-76C	Ø42-76mm	≤12mm		42.45.54.57.60.63.68.76	
ISO-89C	Ø63-89mm	≤12mm		63.68.76.83.89	
ISO-114C	Ø76-114mm	≤12mm		76.83.89.95.102.108.114	

部分客户施工现场

Part of the Customers Construction site







质量源于持续改进
Quality Form Continuous Change

上海淘乐机械有限公司
Shanghai Tao Le Machinery Co., Ltd

地址: 上海市闵行开发区祥云路58号
ADD: No.3 Building, No.58 Xiangyun Road,
Minhang District, Shanghai, Republic of China 200245
TEL: 0086 021 64140658 FAX: 0086 021 64140657
WEB: www.tlhanjie.com www.pokoji.com
E-MAIL: lele@taole.com.cn

